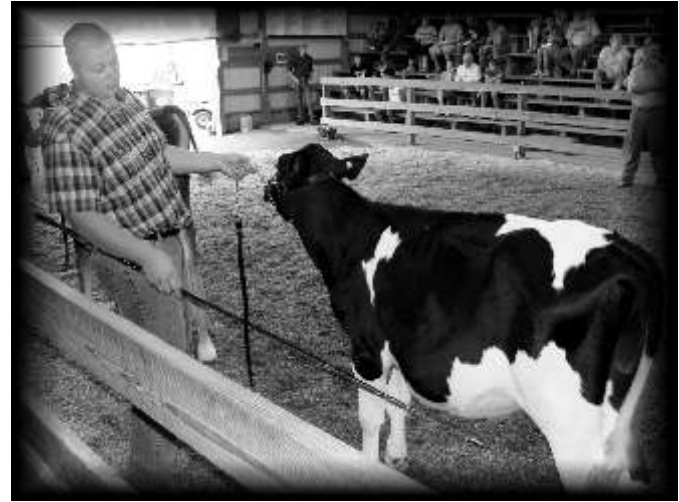
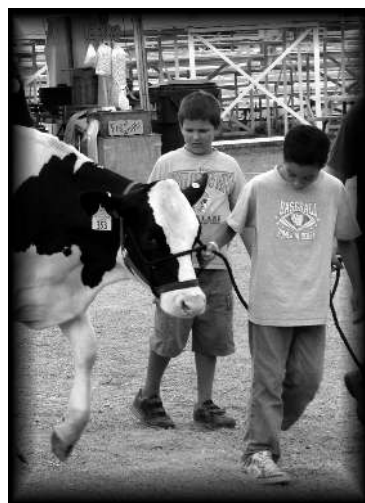




DAIRY



DAIRY



SMITH'S

Premium Dairy Products

Everything that has the SMITH'S name on it is fresh, consistently delicious, and made to the highest premium standards. And it's produced right here in Ohio.

Look for the SMITH'S name. With a rich history of quality, SMITH'S stands for the best that you can buy!



Contact us at:
800.776.7076
www.smithdairy.com



Supporting Our Holmes County Youth!



Plumbing . Heating . Cooling . Water Conditioning

SERVICE SINCE 1966

1130 Massillon Rd.
Millersburg, OH 44654
(330) 674-5856

24 Hour
Emergency Service
OH LIC. # 27572



REBER MILK TRANSPORT llc

Doug Reber



WATER HAULING
Pool Water ~ Spas ~ Cisterns

330-466-5738

598 E. main st. apple creek, oh 44606

Dar-Re Farm Ltd.

Home of Dar-Re Jerseys



Regan Miller Family
Big Prairie, OH 44611

Todd Ardrey, Consultant
Loudonville, OH 44842

DAIRY BREED CLASSES:

Fair Show order will be as follows: All Animals will enter the show Ring according to class (age) and in alphabetical order. (i.e., Junior Calf: Ayrshire, Brown Swiss, Guernsey, Holstein, Jersey, Milking Shorthorn followed by Intermediate Calf Ayrshire, Brown Swiss, Guernsey, etc) Fair entries should use the following Class/Section Codes. (i.e., Brown Swiss Junior Calf would be entered as 20/10, a Holstein 3 year old cow would be entered as 40/210)

Class Codes:	Section Codes:	Senior Category
10-Ayrshire	<u>Junior Category</u>	200-Two Year Old (Born 9/1/07 to 8/31/08)
20-Brown Swiss	10-Junior Calf (Born 3/1/10 or after)	210-Three Year Old (Born 9/1/06 to 8/31/07)
30-Guernsey	20-Intermediate (Born 12/1/09 to 2/28/10)	220-Aged Cow (Born prior to 9/1/06)
40-Holstein	30-Senior Calf (Born 9/1/09 to 11/30/09)	230-Dry Cow (must have freshened at least once)
50-Jersey	40-Summer Yearling Heifer (Born 6/1/09 to 8/31/09)	
60-Milking Shorthorn	50-Spring Yearling Heifer (Born 3/1/09 to 5/31/09)	
	60-Winter Yearling Heifer (Born 12/1/08 to 2/29/09)	
	70-Senior Yearling Heifer (Born 9/1/08 to 11/30/08)	

DAIRY (Class Code DRY)

Sr. Superintendent: Jamie Darr

Committee: Bill Wachtel-Chairman Jamie Darr, Alan Kozak, Kevin Michalovich, Regan Miller, Bonnie Porter, Heather Reutter, Jodi Reutter, Beverly Wachtel, Carol Watts, Steve Watts.

Jr. Superintendents: Derek Reusser

Committee: RaKayla Burke, Garrett O'Donnell

ENTRY RULES

- All project members and exhibits must follow all Holmes County Jr. Fair General Rules and conform to Livestock Exhibit Health Requirements listed previously in the fair book.
- All livestock, to be exhibited, must be entered on an entry form by July 1, 2010 FAIR ENTRIES PROCEDURE: Fair Entry Forms (for pen assignments) will be accepted at the Holmes Co. Fair Grounds Jr. Fair Board Office on the following dates and times:
Mailed entries will not be accepted.
Tuesday .. June 8 3:00 - 7:00 PM
Thursday .. June 17 3:00 - 7:00 PM
Saturday .. June 26 9:00 AM - NOON
Thursday .. July 1 3:00 - 7:00 PM
on or by July 1 or space will not be available for exhibit.
The animal's date of birth: registration number (or other identification); must be included on the form. This includes all breeds. Club guidelines must be met to show.
- Livestock member project grades will be determined by an interview evaluation (Skill-a-thon), covering project book matter and basic 4-H/FFA knowledge. All Jr. Fair exhibitors must attend scheduled county judging, if unable to attend, club advisors may evaluate projects. Projects must be evaluated and grade(s) submitted to the Extension Office before the scheduled county judging date. Club member must exhibit at the Fair to participate in Dairy Basket Sale.
- Exhibitors must use their project animal for showmanship classes.
- Any club using the parlor is responsible for cleaning the parlor on a scheduled basis. Cleaning includes the parlor area and between the dairy barn and the parlor. Failure to cooperate will eliminate a club from the herdsman award.
- Dairy exhibits (Cows, Heifers, Feeders and Steers) will be monitored daily for cleanliness (pens and animals manure free and clean), Friday and Saturday included.

*Pens free of manure

*Animals clean and free of manure

*Animals fed, washed and pens cleaned out by 10am

A sign will be placed on the pen if it is found to be unacceptable. A time will be placed on the notice when it posted and the exhibitor will have 2 hours to clean the pen. The notice must remain on the pen until it has been cleaned. Dairy Committee members will remove the sign after checking the pen and animal for cleanliness.

*The first violation will be a warning.

*The second violation will result in:

-Dairy Cow and Heifer exhibitors will forfeit dairy basket money

-Dairy Feeders will not be able to sell their animals

- All exhibitors must wear white trousers and white shirts. Breed logo/promotion is acceptable, but farm promotion will not be allowed.
- Dairy Project members must be present at the Dairy Basket Sale unless prior arrangements have been made with the Dairy Committee.
- Dairy Leases (National Breed Leases or Standardized 4-H Livestock Lease Forms) are due June 1 to the Extension Office.

**SIDLE TRANSIT SERVICE, INC.**

5454 N. Crownhill Rd.
Orrville, Ohio 44667

MILK CARTAGE

GARAGE: 330-683-2807

FAX: 330-682-2802

ALL BREED SHOWMANSHIP ENTRY RULES

- Showmanship classes are divided by first year project members and by age of Exhibitor as of January 1.
Junior 11 years or under;
Intermediate 12,13 or 14;
Senior 15 years and over.
First year project members, any age, are encouraged to enter Beginners Showmanship class and will be ineligible to compete in Junior, Intermediate or Senior Showmanship class for the current year.
- Previous winners of age classes are eligible to show in Supreme Showmanship as well as in their current age class.
- If there are more than 12 exhibitors in a Showmanship class, the group will be divided.

Section/Class Description**100-DAIRY SHOWMANSHIP (All Breeds)**

100-20 Senior Dairy Showmanship (Ages 15 & over)

Award Sponsors:

- Grand Champion-PNC: Ag Banking - Tom Stocksdale
- Reserve Grand Champion-Holmes County DHI Committee

100-30 Intermediate Showmanship (Ages 12 thru 14)

Award Sponsors:

- Grand Champion-Spring Walk Farm
- Reserve Grand Champion-Gerber & Sons

100-40 Junior Showmanship (Ages 11 & under)

Award Sponsors:

- Grand Champion-Dairy Farmers of America
- Reserve Grand Champion-Dr. Steven R. Close, DVM

100-50 Beginner Showmanship (1st Year Members only)

Award Sponsor: Wachtels - Spring Walk Farms

100-60 Supreme Showmanship

(Open to Div. winners & eligible past winners)

Award Sponsors:

- Grand Champion-Farm Credit Services of Mid-America
- Reserve Grand Champion-Galen & Deb Garver

2009 DAIRY ALL BREED SHOWMANSHIP WINNERS

Senior: Martin Overholt Intermediate: Parker Herman

Junior: William Hughes




I THOUGHT I WAS
TIGHT WITH MY
MONEY. NOW
I'M AIRTIGHT.

All it took was a tube of
caulk and half an after-
noon. Now, I'm saving \$212 a year by
sealing a few cracks around the house.
What can you do? Find out how the little
changes add up at *TogetherWeSave.com* or
contact our Energy Advisor.

24 hour toll - free telephone numbers
866-674-1055 * 888-264-2694
hwecoop.com



Holmes-Wayne Electric
Cooperative, Inc.

A Touchstone Energy® Cooperative 

Paullin Milk Cartage, Inc.



MILK HAULING & WATER HAULING

1-419-368-6301

2285 Co. Rd. 377
Loudonville, Ohio 44842

PRECISION POURED WALLS

www.precisionpouredwalls.com

COMMERCIAL & RESIDENTIAL & AGRICULTURAL
QUALITY WORK. COMPETITIVE PRICES



330-279-2211

9845 C.R. 329 - Holmesville, OH 44633

Brick Design Retaining Walls, Foundations,
Manure Pits, Water Tanks, Bunk Silos, Etc.

Maibach Tractor LLC

AGCO
Tractors

Massey Ferguson
Tractors

AGCO
Manure Spreaders

WHITE
Planters

HESSTON
HAY EQUIPMENT

SUNFLOWER
Tillage

LEON

Manure Spreaders

WHITE

Pottinger
Hay Equipment

& OLIVER
Used & Aftermarket
Parts

13701 Eby Road Creston, OH 44217

800-808-9934

10-Ayrshire

Award Sponsors:

- Grand Champion-Ayrdell Farm
- Reserve Grand Champion-Northeast Ohio Ayrshire Assoc.

20-Brown Swiss

Award Sponsors:

- First Year Award- Open-Road Farm
- Junior Champion-Steimel Law Office
- Reserve Junior Champion-Performance Feed,
Bob & Jason Bryant
- Grand Champion-Cargill Animal Health-Michele Lahmers
- Reserve Grand Champion-Garbro Swiss

30-Guernsey

Award Sponsors:

- First Year Award-Eileen Wachtel, In Memory of Floyd Wachtel
- Junior Champion-Martin Yoder Hoof Care
- Reserve Junior Champion-Coba
- Reserve Grand Champion- Eileen Wachtel,
In Memory of Floyd Wachtel
- Grand Champion-Spring Walk Farms - Bill & Kurt Wachtel

40-Holstein

Award Sponsors:

- First Year Award-District 7 Holstein Assoc.
- Junior Champion-Brian Watts
- Reserve Junior Champion-Crooked Run
Monogramming Louise & Edna Harding
- Grand Champion-TMK Farm Service, Berlin
- Reserve Grand Champion-Spring Hill Farm

50-Jersey

Award Sponsors:

- First Year Award-Dar-Re Jersey Farm
- Junior Champion-Harold's Equipment, Dundee
- Reserve Junior Champion-Byland Animal Hospital,
Loudonville
- Senior Champion-Loudonville Farmer's Equity
- Grand Champion-Holmes Ag Inc., Holmesville
- Rosette-Ohio Jersey Breeders Assoc.
- Reserve Grand Champion-GENEX Cooperative Inc.

60-Milking Shorthorn

Award Sponsors:

- Grand Champion-Loudonville Farmers Equity
- Reserve Grand Champion-

Junior Champion- By Breed

Supreme All-Breed Jr. Champion

Award Sponsor-RNR Swiss Farms/Michalovich Family

Senior Champion- By Breed

Supreme All-Breed Grand Champion

Award Sponsor- Spring Walk Farm, In Memory of Floyd Wachtel

Use  Dairy
Products!

Spring Walk Farm

Guernseys & Holsteins



Bill and Bev Wachtel
13079 TR 503
Big Prairie, OH 44611
330-378-2273

Kurt and Kathy Wachtel
12929 TR 503
Big Prairie, OH 44611
330-378-4302

VISITORS ALWAYS WELCOME!



W.G.
Dairy Supply, Inc.

KATOLIGHT
BouMatic

SCHULER
polynome

ACE

SCHAEFER
TRAILER CO.

JAMESWAY

CORNING

TRAILER

12993 Cleveland Rd. • Box 2224
Creston, OH 44217
1½ Miles South of Creston, On St. Rt. 3
(330)435-6522 or 435-4440
1-800-821-3952

DAIRY MARKET STEER ENTRY RULES

All entry rules in the Beef section apply to the Dairy Market Steers and also the following rules.

1. Dairy Steers means both sire and dam are of the same dairy steer breed. Dairy Steers cannot exhibit any beef characteristics. If there are questions as to beef or dairy, the Market Steer Committee will make a decision at the December weigh-in.
2. Dairy Steer must weigh a minimum of 1,040 pounds. (Holstein and Brown Swiss to sell at the Junior Livestock Sale. Ayrshire, Guernsey, Milking Shorthorns minimum weight is 850 pounds. Jersey minimum weight 700 pounds.)
3. Exhibitor may show and sell one dairy steer.
4. Dairy Steer will show by weight.
5. All steers are to be shown in a show halter with a show stick.
6. Class winners will compete for Grand Champion and Reserve Grand Champion Dairy Steer.
7. Dairy Market Steers and exhibit area must be kept clean. Failure to comply may result in loss of sale privilege.
8. Unruly steers that pose a safety threat and disrupt the show may be dismissed from the show and graded in the barn. Unruly steers that are dismissed from the show ring will be placed last in the class.
9. In the event that an exhibitor is unable to handle their steer in the show ring it is expected that a parent, sibling or advisor will enter the show ring and assist. Such assistance is permitted only, when required, for control and safety. It will not be tolerated if it appears to be an effort to gain show advantage by placing a more experienced showman at the halter.
10. Dairy Steers will not be eligible for the Beef Carcass Show.
11. 4-H or FFA project member is only permitted to show a Dairy Steer or a Beef Steer, not both.
12. A minimum of four Dairy Steer Projects must be shown at the Jr. Fair in order to hold a Dairy Steer Show the following year.
13. Dairy Steers must be castrated and not have any testicular development or intact spermatic cords by 8 months of age.

900- 30 DAIRY MARKET STEERS

900-31 Dairy Steers Weight Class 1


900-32 Dairy Steers Weight Class 2

900-33 Dairy Steers Weight Class 3

Grand Champion Dairy Steer






Award Sponsors:





- Grand Champion-Schlegel Dairy Farms
- Reserve Grand Champion-Mt. Hope Auction



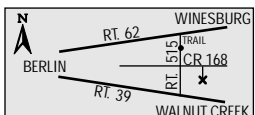
HAROLD NEUENSCHWANDER - Owner
Office: 330-893-2348
Cell: 330-231-1634

HAROLD'S EQUIPMENT, INC.

2120 CR 168
Dundee, OH 44624
www.haroldsequipment.com
haroldn@haroldsequipment.com
1-800-905-0940



POMERENE EXPRESS CARE

Nobody said going to the doctor was fun.
But knowing you will be greeted with a friendly
smile and a caring hand certainly makes it easier.
We're here to take care of you, so the next time
you have a situation that is not life-threatening,
but still requires prompt care, come in and see us.
And if you're good, you might get a popsicle.



www.pomerenehospital.org

The Right Kind of Medical Care at Just the Right Time
With two locations to better serve you:

German Village Center Lower Level 330-893-2754	Mt. Hope Medical Center 4606 T.R. 634 330-674-4711
--	--



*Producing Quality Cheese
for 45 years*

"Make It Swiss"

Brewster Dairy, Inc. PO Box 98


800 South Wabash Avenue Brewster, Ohio 44613

Phone 330-767-3492 Fax 330-767-3386

www.brewstercheese.com

DAIRY ALL BREED SHOWMANSHIP WINNERS

YEAR	JUNIOR	INTERMEDIATE	SENIOR	SUPREME
2006	PARKER HERMAN	KATELYN HERSHBERGER	RENEE HERSHBERGER	KATELYN HERSHBERGER
2007	BROCK MACAULAY	KATELYN HERSHBERGER	RENEE HERSHBERGER	RENEE HERSHBERGER
2008	HALEY BAIRD	GEORGE CRONE	RENEE HERSHBERGER	RENEE HERSHBERGER
2009				




HOLMES CHEESE CO.

WE SALUTE DAIRY FARMERS!

Quality
Swiss
Cheese

**9444 SR 39 WEST
MILLERSBURG, OH
330-674-6451**



DAIRY FEEDER SHOWMANSHIP ENTRY RULES

- Showmanship classes are divided by first year project members and by age of Exhibitor as of January 1.
 - Junior - 11 years or under;
 - Intermediate - 12, 13 or 14;
 - Senior - 15 years and over.
 First year project members, any age, are encouraged to enter Beginners Showmanship Class and will be ineligible to compete in Junior, Intermediate or Senior Showmanship class for the current year nor are they eligible for the Outstanding Market Award.

Section/Class Description

150 - DAIRY FEEDER SHOWMANSHIP

150-20 Senior Dairy Feeder Showmanship (Ages 15 & over)

Award Sponsors:

- Grand Champion-The Daily Record
- Reserve Grand Champion-Ree-Kay Acres

150-30 Intermediate Dairy Feeder Showmanship

(Ages 12 thru 14)

Award Sponsors:

- Grand Champion- Open-Road Farm
- Reserve Grand Champion-The Daily Record

150-40 Junior Dairy Feeder Showmanship (Ages 11 & under)

Award Sponsors:

- Grand Champion-Harold's Equipment Inc.
- Reserve Grand Champion-The Daily Record

150-50 Beginner Dairy Feeder Showmanship

(1st Year Members only)

Award Sponsor: Ree-Kay Acres

150-60 Dairy Feeder Supreme Showmanship

Award Sponsors: Keith Reutter Family

2007 Winner: Renee Hershberger

2008 Winner: Katelyn Hershberger

DAIRY FEEDER ENTRY RULES

- All project members and exhibits must follow all Holmes County Jr. Fair General Rules and conform to Livestock Exhibit Health Requirements listed previously in the fair book.
- All livestock, to be exhibited, must be entered on an entry form by July 1, 2010 FAIR ENTRIES PROCEDURE: Fair Entry Forms (for pen assignments) will be accepted at the Holmes Co. Fair Grounds Jr. Fair Board Office on the following dates and times:

Mailed entries will not be accepted.

Tuesday June 8 3:00 - 7:00 PM
 Thursday June 17 3:00 - 7:00 PM
 Saturday June 26 9:00 AM - NOON
 Thursday July 1 3:00 - 7:00 PM

on or by July 1 or space will not be available for exhibit.

Club guidelines must be met to show.

- Livestock member project grades will be determined by an interview evaluation (Skill-a-thon), covering project book matter and basic 4-H/FFA knowledge. All Jr. Fair exhibitors must attend scheduled county judging, if unable to attend, club advisors may evaluate projects. Projects must be evaluated and grade(s) submitted to the Extension Office before the scheduled county judging date. *Members who do not attend scheduled county judging are not eligible for Outstanding Market Livestock Awards.*
- 4-H or FFA members who plan to exhibit dairy feeders at the county fair must have their animals tagged at the fairgrounds on May 15 from 8 - 11 AM, No exceptions. Exhibitors may identify two calves but may only show and sell one at the fair. Dairy feeder exhibitors have the option to sell their animals or take the feeder home after the fair, *except for the Grand Champion and Reserve Grand Champion, which must be sold.*
- Dairy feeders are to be in assigned stall by 9:00 PM., Sunday.
- Dairy feeders must be 428 - 735 pounds to show and sell.
- Feeders must be purebred dairy steers - no heifers and no beef or dairy crossbred feeders can be shown. Any questionable animal can be disqualified at the discretion of a committee made up of the Dairy Committee, Fair Vet and Fair Board.
- Disqualified animals are eligible for showmanship. Feeders must be dehorned with no more than a 2 inch scur. All feeders are to be castrated by either cutting or banding and must not have any testicular development - no pinching is allowed. Castration procedure must be completed far enough in advance of fair that no open wound is visible at the time of the fair.
- Dairy feeders will be sold during the Jr. Fair Auction on Friday evening.
- Showing will be in the style of showing for beef animals. Show sticks are important for proper show appearance.
- Dairy Feeders and exhibit area must be kept clean. Failure to comply may result in loss of sale privilege.
- Classes will be divided by the total number of animals that are registered with no more than 10 feeders in each class.
- Top 3 Feeders in each Class will be brought back for Champion competition.
- Underweight and overweight feeders will not show, but will be able to sell last.

Section/Class Description

900 - DAIRY FEEDERS

900-11 Dairy Feeder Weight Class 1

900-12 Dairy Feeder Weight Class 2

Grand Champion Dairy Feeder

Award Sponsors:

- Grand Champion-Carlisle Quick Mart, Inc.
- Reserve Grand Champion-Harold's Equipment Inc.

ALL BREEDS WILL BE SHOWN TOGETHER.

Lakeside Home Care , LLC

www.lakesidehomecare.com

*Serving the needs of individuals in Ashland
Holmes, Richland and Wayne Counties.*

*We are Passport Approved in Ashland,
Holmes, Richland and Wayne Counties.*

*Dedicated to giving professional
attention to our patients.*



- Personalized care
(Including Alzheimer's patients)
- Physical, Social & Emotional Care
- Bathing & Dressing Assistance
- Medication Reminder
- Housekeeping & Laundry
- Shopping for Groceries &
Medication Pick-Ups
- Caring Companionship

Wooster - 330-264-1818

Lakeville - 419-827-2222

Mansfield - 419-589-2423

WHERE QUALITY STILL COUNTS

*Specializing In Quality Storage Solutions...
At Everyday Prices!*



MILLER'S STORAGE BARN

Located 1.5 Miles East of Berlin
4230 St. Rt. 39 • Millersburg
330-893-3293

Cotton & Ink

CUSTOM DESIGN SPECIALISTS

TEAM APPAREL T-SHIRTS

EMBROIDERY SIGNS/BANNERS

SPORTING EQUIPMENT

VEHICLE GRAPHICS/DECALS

NEW BUSINESS DESIGN SUBLIMATION

EXCELLENT CUSTOMER SATISFACTION

1 HILTOP DRIVE

PERRYVILLE, OH 44864

cottonandink@verizon.net

419-994-0089